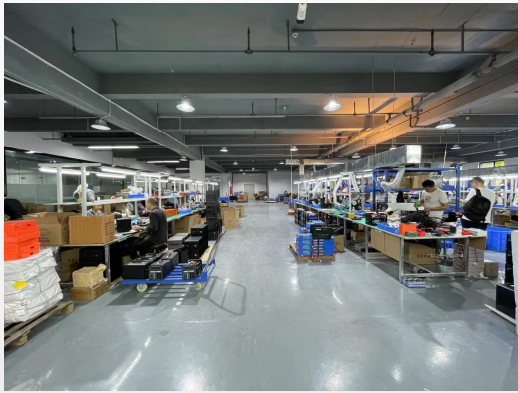
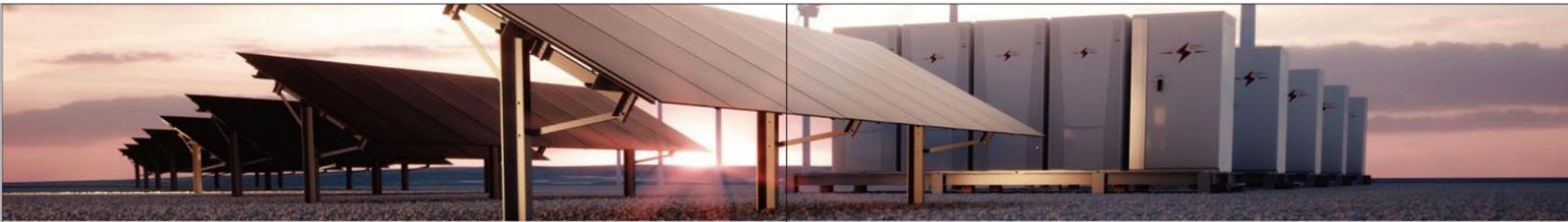


Company Introduction **JUMBOECO**

We are a company specializing in design, developing, production and trading power station and accessories. The company's products include portable power station, mobile power station, home power station and commercial power station. We have professional R & D and QC team, with rich experience in product design and development and quality control management.

We always stick to innovation, quality, high-end development and design concept, to provide customers with high quality products; meanwhile, we also supply customers professional technical support and good after-sales service. All products comply with CE\ FCC\ MSDS \UN38.3 standard and so on.





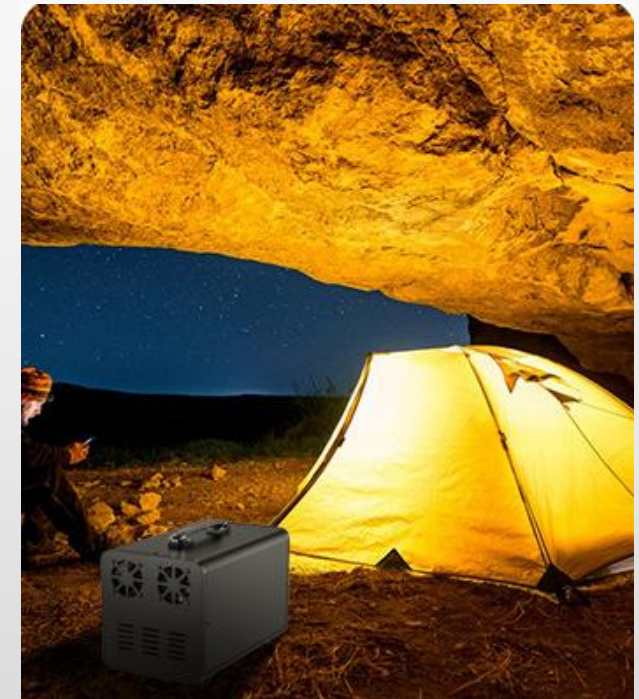
Professional outdoor portable power station, household emergency, commercial energy storage manufacturers

JUMBOECO



PORTABLE POWER STATION INTRODUCTION

Professional outdoor portable power station manufacturers





JUMBOECO

Source factory

**Focus on research and development
Professional Quality
Product Guarantee**



落地式家庭储能

Floor type energy storage power



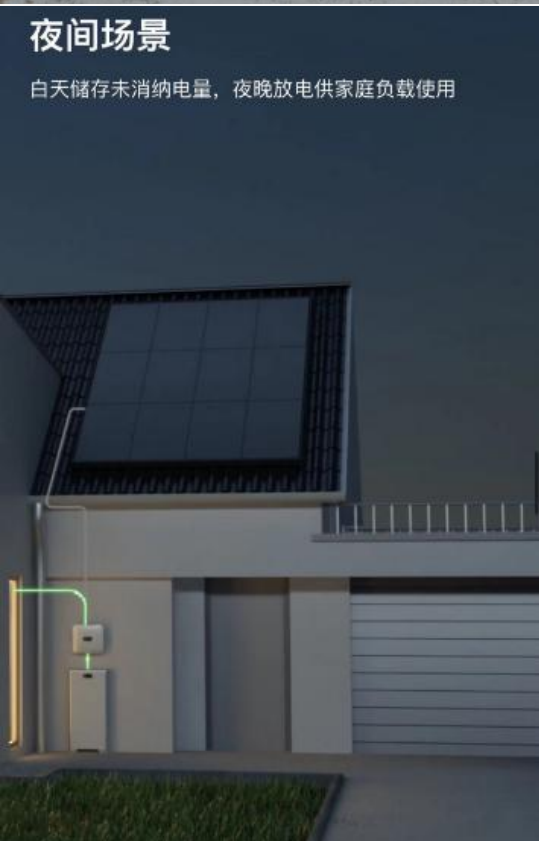
刀片型壁挂式家庭储能

Blade type wall-mounted home energy storage



夜间场景

白天储存未消纳电量，夜晚放电供家庭负载使用



JUMBOECO



日间场景

屋顶安装光伏组件，白天吸收阳光产生直流电，将直流电转化为交流电，优先供家庭负载使用





Small solar energy storage system

Product advantage

- Support solar panel charging/mains charging • BMS intelligent protection, safe use of electricity
- LiFePO₄ battery cell, 3000+ cycle life
- Compact and portable



Parameter	Specification
USB output ports (x2)	5V/3A
Solar charging input (x1)	18V
DC output ports (x4)	12V/10A
DC charging input (x1)	14.6V
Battery	LiFePO ₄

Model No: ES01

200W 300W 400W 500W

110Wh-450Wh



Parameter	Specification
AC output port (x1)	220V 50Hz
USB output ports (x2)	5V/3A
Type-C output ports (x2)	18W
Soler charging input (x1)	18V
LED lighting (x1)	3W
DC output ports (x2)	12V/10A
DC charging input (x1)	14.6V
Battery	LiFePO4

- Compact and portable
- BMS intelligent protection, safe use of electricity
- LiFePO₄ battery cell, 3000+ cycle life
- Supports solar charging, mains charging, and car charging, suitable for various scenarios



Model No: ES01-L 600W-1500W



Parameter	Specification
AC output (x2)	220V 50Hz
DC output/output (x2)	12V/15A, 180W
USB (x5)	5V/3A
Type-C (x1)	45W
Cigarette lighter output (x1)	12V, 10A, 120W
Solar charging input (x2)	Maximum support 500W, 18V/15A XT90 Super Fast Charging (x1)
LED Lighting (x2)	5W LED lighting /SOS
On-board charging	Supported
Car emergency start	Support (only 1500W, with car emergency start clip)
Discharge temperature	-20°C to 55°C
Charging temperature	-10°C to 40°C
Cycle life	2500+ (depending on use and maintenance)
Software	Pure sine wave output, BMS intelligent protection, safe use of electricity

Model No: ES01-L 2000W



Parameter	Specification
AC output (x2)	220V 50Hz
DC (air port) output/output (x2)	24V/15A, 360W
USB (x5)	18W
Type-C (x1)	65W
Cigarette lighter output (x1)	24V 10A, 240W
Solar charging input (x2)	Maximum support 500W, 36V/10A XT90 Super Fast Charging (x1)
LED Lighting (x2)	5W LED lighting /SOS
On-board charging	Supported
Discharge temperature	-20°C to 55°C
Charging temperature	-10°C to 40°C
Cycle life	2500+ (depending on use and maintenance)



Parameter	Specification
AC output (x2)	220V 50Hz
DC output/output (x1)	12V/10A
USB (x2)	5V/2.4A
DC output (x1)	12V10A
LED Lighting (x1)	5W LED lighting /SOS
Discharge temperature	-20°C to 55°C
Charging temperature	-10°C to 40°C
Cycle life	2000+ (Lithium battery cells)
Software	Supports solar charging, mains charging, and car charging, suitable for various scenarios
Power Voltage	300W /12.6V

Model No: MP1 300W



便携手提包

车载充电器

Parameter	Specification
AC output (x1)	220V 50Hz
DC (air port) output/output (x2)	12V/10A, 120W
USB (x1)	5V/3A
Type-C (x1)	65W
Solar charging input (x1)	Maximum support 200W, 18V/10A
LED Lighting (x1)	5W LED lighting
Discharge temperature	-20°C to 55°C
Charging temperature	-10°C to 40°C
Cycle life	2500+ (depending on use and maintenance)

Model No: MP1X 200W-300W



Parameter	Specification
Power	200W, 300W
Voltage	12.6V
Battery capacity	144Wh, 240Wh
AC output (x1)	220V 50HZ
DC output (x3)	12V10A
USB output (x2)	5V/2.4A
DC input (x1)	12V/10A 120W
Cycle life	2000+ (Lithium battery cells)
Software	Supports solar charging, mains charging, and car charging, suitable for various scenarios
Modified wave output, BMS intelligent protection, safe use of electricity	

Model No: ES03 200W~500W



Parameter	Specification
AC output (x2)	220V 50Hz
USB output (x3)	5V/3A
Type-C output (x1)	18W
Solar charging input (x1)	18V
LED lighting (x1)	3W
DC output (x4)	12V/10A *4
DC charging input (x1)	14.6V
XT60 (x1)	1 pcs
Battery	LiFePO ₄
Cycle life	3000+ (depending on use and maintenance)

Model No: MP2L 400W



Parameter	Specification
AC output (x2)	220V 50Hz
DC (air port) output (x1)	12V/10A, 120W
USB (x2)	5V/3A
Cigarette lighter output (x1)	12V 10A, 120W
Solar charging input (x1)	Maximum support 200W, 18V/10A
LED Lighting	5W LED lighting
On-board charging	Supported
Discharge temperature	-20°C to 55°C
Charging temperature	-10°C to 40°C
Cycle life	2500+ (depending on use and maintenance)
Software	Support emergency power supply for automobiles Support dual solar charging, dual mains charging, driving charging, and generator charging
Correcting sine wave output, BMS intelligent protection, safe use of electricity	

Model No: ES6 350W/600W/900W



Parameter	Specification
AC output (x2)	220V 50Hz
DC input/output (x2)	12V/10A, 120W
USB (x2)	18W
Type-C (x2)	45W
Cigarette lighter output (x1)	12V, 10A, 120W
Solar charging input (x2)	Maximum support 200W, 18V/10A
LED Lighting	5W LED lighting
On-board charging	Supported
Shell material	ABS+PE
Discharge temperature	-20°C to 55°C
Charging temperature	-10°C to 40°C
Cycle life	2500+ (depending on use and maintenance)
Software	Support dual solar charging, dual mains charging, driving charging, and generator charging



Model No: ES8 800W / 1500W



Parameter	Specification
AC output (x2)	220V 50Hz
DC input/output (x2)	12V/10A, 120W
USB (x4)	5V/2A
Type-C 3.0 (x1)	45W
Cigarette lighter output (x1)	12V, 10A, 120W
Solar charging input (x1)	Maximum support 200W, 18V/10A
LED Lighting	5W LED lighting
USB fast charging port (x1)	5V/3A
Discharge temperature	-20°C to 55°C
Charging temperature	-10°C to 40°C
Cycle life	2500+ (depending on use and maintenance)
Software	Support dual solar charging, dual mains charging, driving charging, and generator charging

Model: MPX10 600W-1200W

JUMBOECO



Parameter	Specification
AC output (x2)	220V 50Hz
DC input/output (x2)	12V/10A, 120W
USB 3.0 (x2)	18W
Type-C 3.0 (x1)	65W
Cigarette lighter output (x1)	12V, 10A, 120W
Solar charging input (x3)	Maximum support 500W, 18V/10A
LED Lighting	5W LED lighting /SOS
On-board charging	Supported
Discharge temperature	-20°C to 55°C
Charging temperature	-10°C to 40°C
Cycle life	2500+ (depending on use and maintenance)
Software	Pure sine wave output, BMS intelligent protection, Support dual solar charging, dual mains charging, driving charging, and generator charging

Model: MPX15 1500W/1700W

JUMBOECO



Parameter	Specification
AC output (x4)	220V 50Hz
DC input/output (x2)	12V/15A, 180W or 24V/15A ,360W
USB 3.0 (x2)	18W
Type-C 3.0 (x2)	65W
Cigarette lighter output (x1)	12V, 10A, or 24V /10A
Solar charging input (x2)	Maximum support 400W, 18V/15A or 36V/15A
LED Lighting	5W LED lighting /SOS
On-board charging	Supported
Discharge temperature	-20°C to 55°C
Charging temperature	-10°C to 40°C
Cycle life	2500+ (depending on use and maintenance)
Support emergency start-up/power replenishment of automobiles Support dual solar charging, dual mains charging, driving charging, and generator charging, BMS intelligent protection	

Model: MP5 600W-1300W



Parameter	Specification
AC output (x2)	220V 50Hz
DC input/output (x2)	12V /12V-10A 120W
USB (x2)	PD 3.0
Type-C (x2)	65W
Cigarette lighter output (x1)	12V, 10A
Solar charging input (x2)	Maximum support 500W, solar panel
On-board charging	Supported
Discharge temperature	-20°C to 55°C
Charging temperature	-10°C to 40°C
Cycle life	2500+ (depending on use and maintenance)
Support emergency start-up/power replenishment of automobiles Support dual solar charging, dual mains charging, driving charging, and generator charging, BMS intelligent protection	

Model: MP25 2500W

JUMBOECO



Parameter	Specification
AC output (x3)	220V 50Hz
DC input/output (x2)	24V/15A,360W
USB output (x2)	5V/3A,12W
Type-C (x2)	65W
Cigarette lighter output (x1)	24V, 10A,240W
Solar charging input (x2)	Maximum support 500W, 36V/10A
LED Lighting	5W LED lighting /SOS
On-board charging	Supported
Discharge temperature	-20°C to 55°C
Charging temperature	-10°C to 40°C
Cycle life	2500+ (depending on use and maintenance)
Support emergency start-up/power replenishment of automobiles Support dual solar charging, dual mains charging, driving charging, and generator charging, BMS intelligent protection	

Model: MP25-TL 2500W

LiFePO₄ Battery

JUMBOECO



Parameter	Specification
AC output (x3)	220V 50Hz
Power Capacity	2500W ,3360Wh
USB output 3.0(x4)	18W
Type-C 3.0 (x4)	65W
Cigarette lighter output (x1)	24V, 10A
Solar charging input (x2)	Maximum support 500W, 36V/10A
LED Lighting	5W LED lighting /SOS
Discharge temperature	-20°C to 55°C
Charging temperature	-10°C to 40°C
Cycle life	LiFePo ₄ , 4000+ (depending on use and maintenance)
Support emergency start-up/power replenishment of automobiles Support dual solar charging, dual mains charging, driving charging, and generator charging, BMS intelligent protection	

Model: PLF600 Outdoor portable power station Home energy storage two-in-one 6000W



Bidirectional fast charging
220V mains power direct charging 4 hours full charge
Dual-screen display
supporting multi-machine parallel stacking



Parameter	Specification
AC output (x4)	220V 50Hz
Power Voltage and Battery Capacity	6000W ,48V , 11000Wh
USB output 3.0 (x6)	18W
Type-C 3.0 (x2)	65W
DC output (x2)	12V
Solar charging input (x2)	Maximum support 4000W, solar pannel input
Discharge temperature	-20°C to 55°C
Charging temperature	-10°C to 40°C
Cycle life	LiFePo4, 4000+ Super fast charging takes 3 hours
	<ul style="list-style-type: none">• BMS intelligent protection, Support UPS function• Stacking: Supports multiple machines connected and stacked in parallel• Pure sine wave output, BMS intelligent protection, safe use of electricity

Home/commercial energy storage

All in one



Split type



Function:

- Lithium iron phosphate blade power battery
- Cycle times: >4000 times

Modular stack design to expand battery capacity on demand; Convenient and flexible

Supports low-power (48-72 V) and high-power three-box (380V) solutions

Support solar panel charging

Support the option of connected OR off-grid

Communication port: RS485/RS232



Widely used

Applicable to various communication application scenarios including mountain communication base stations, remote communication base stations, rooftop stations, outdoor macro stations, outdoor micro stations and indoor base stations



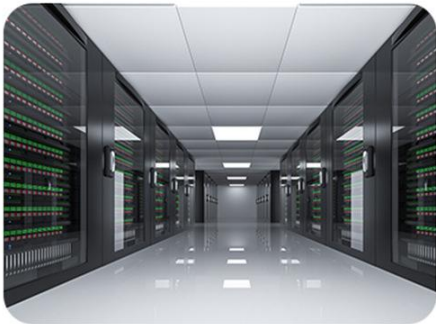
Solar panels



Mountain communication base station



Communication base station energy storage



Backup power supply

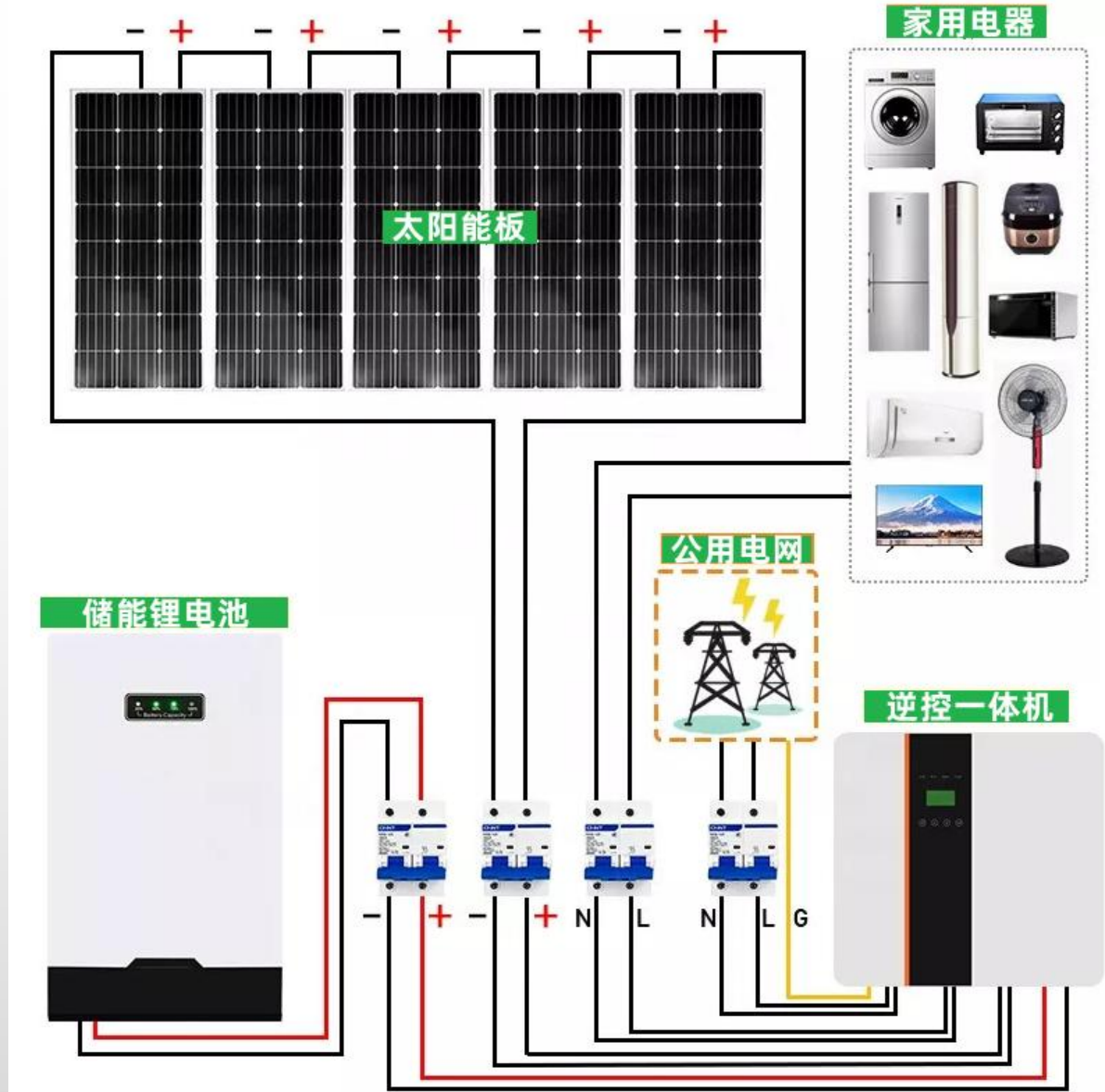


Home energy storage



Industrial energy storage

Inverter integrated and off-grid photovoltaic energy storage power station



Application introduction

5KW suitable for appliances



2000W AC



1500W AC



500W Icebox



200W TV



600W cooker



200W Lighting

Can carry 7-10 household appliances (total power within 5KW)

3P air conditioner, refrigerator, washing machine, electric kettle, rice cooker, fan, TV, water heater, vacuum cleaner, computer

10KW suitable for appliances



2000W 5HP AC



1500W AC



500W Icebox



200W TV



600W cooker

Can carry 12-15 household appliances (total power within 10KW)

Central air conditioner, water pump, refrigerator, washing machine, electric kettle, rice cooker, hair dryer, fan, TV, water heater, microwave oven, vacuum cleaner, computer, range hood, sweeping robot